

# Regional Center Greece: *The Role*

- ❑ Institutional interactions between KT actors
- ❑ Bridging activities (Education, research, business) to facilitate innovation
- ❑ Development and implementation of joint educational and innovation initiatives
- ❑ Supporting existing and new members of the RawMaterials Community



Supported by:

# EIT RM HUB-Regional Center Greece *The ecosystem*



## Συνεργαζόμενοι Φορείς

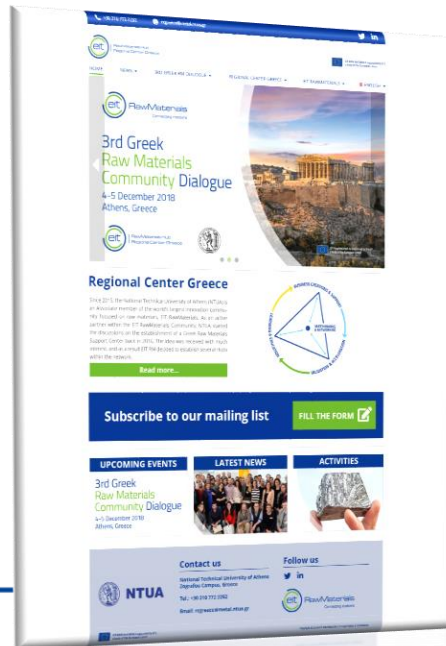


Supported by:

# EIT RM HUB-Regional Center Greece *Contact Information*

- Emeritus Professor Ioannis Paspaliaris, *Director*
- Assistant Professor Maria Taxiarchou, *Supervisory Board Member*
- Professor Katerina Adam, *Education Advisor*
- Konstantina Papakonstantinou, Project Manager, *Msc Chemical Engineer* [Konstantina\\_papakonsta@metal.ntua.gr](mailto:Konstantina_papakonsta@metal.ntua.gr)
- Vasiliki Missa, Financial Manager, *Chemical Engineer MSc* [vmissa@metal.ntua.gr](mailto:vmissa@metal.ntua.gr)

➔ Visit: <https://rcgreece.labmet.ntua.gr/>



EIT RawMaterials HUB – Regional Center Greece  
School of Mining and Metallurgical Engineering  
National Technical University of Athens  
9 Heron Polytechniou Str. Zografou 15780, Athens, Greece



00 30 210 7722252  
00 30 6939611173

[konstantina\\_papakonsta@metal.ntua.gr](mailto:konstantina_papakonsta@metal.ntua.gr)



Follow us!



<http://rcgreece.labmet.ntua.gr/>

**Subscribe to our mailing list to get the latest news and updates!**

Supported by:

